

Project by:



Ph.: +91 70466 69911 | 70466 69922
Email : sudhapatidevelopers@gmail.com

Architect : **space plus**
Kiran Patel
Architecture • Planning • Interiors

Structure :
Zarna Associates

Site : "Aarya Elegance", Behind Banco,
Near Aarya Exotica, Bill, Vadodra.

Payment Schedule : 10% At the time of Booking | 20% After signing AFS | 15% On Completion of Plinth | 25% On Completion of Slab | 05% On Completion of wall & Plaster | 05% On Completion of Plumbing
05% On Completion of Sanitary Fitting | 10% On Completion of Lift & Water Pump | 05% On offer of Possession (30 days before Intimated Possession Date)

Terms & Conditions: 1. Internal changes shall be allowed only with prior permission and extra work will be executed after receipt of full payment in advance. 2. Additional documentation changes such as Stamp Duty, Registration Fees, MGVL, Service Tax, VAT, Insurance, Legal Documents (as per new bylaws/jantri/revenue department) and other relative expenditures are to be borne by the member. 3. Municipal taxes from the date of sale shall be borne by the member. 4. Any kind of taxes/duties implemented by the government or local authorities during or after completion of the project are to be borne by the member. 5. Member have to pay maintenance deposit extra. 6. Possession of the unit will be given only on receipt of full payment including maintenance deposit. 7. In case cancellation of booking, 20% of the total value of the shop/flat & payable service tax will be forfeited. 8. Member have no any right to make changes or alteration in the elevation of the building. 9. The developers reserve the rights to make any changes, alternations, specifications as may be required and can change without any prior notice. Such changes will be binding to all members. 10. Fixtures shown in brochure are for presentations only. 11. The brochure shall not be treated as legal document, it is purpose of information only. 12. In case of any dispute, it will be resolved by mutual discussion and understanding, filing which the matter will be Nadiad Jurisdiction only.

AARYA

ELEGANCE

Dream gets Converted to Reality

AARYA ELEGANCE

Welcome to the Dream of Elegance
Aarya Elegance offers you
1BHK - 2BHK Flats
with Luxury & Nature together

Add Value to your Investment





AARYA ELEGANCE

Happiness & Joy

It is pleasure to take you in the world of AARYA ELEGANCE.
More than Apartments, Aarya Elegance is a carefully crafted
cocoon where we have preserved warmth,
happiness and joy to make your life a cheerful one.

www.sudhapatidevelopers.com



AARYA ELEGANCE

Magnificence & Awesomness

Beautiful architecture, thoughtful planning, location connectivity...
whatever you wish while deciding upon a dream abode is here.
It is a dream life you would love to offer your near and dear ones.



www.sudhapatidevelopers.com



- Beautiful Garden
- Club House / Yoga Space
- Indoor Games
- Foyer Entrance
- Senior Citizen Area
- Decorative Main Entrance Gate with Security Cabin
- CCTV Camera only Parking
- 24 Hrs. Water Supply

Leisure Amenities

Residence



Health



Yoga



Nature



Purity



Space



Luxury

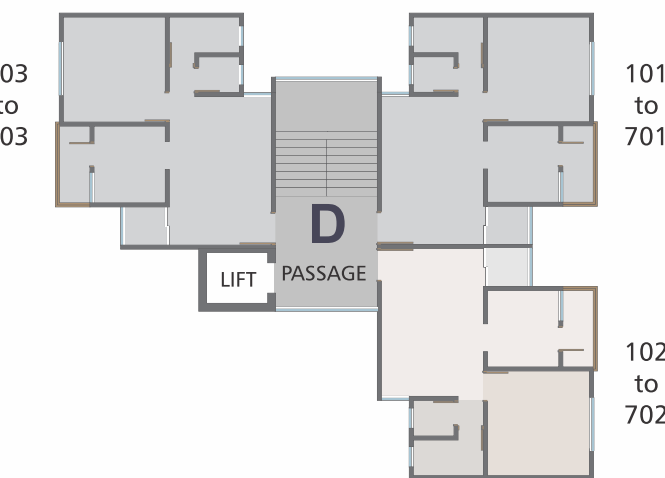
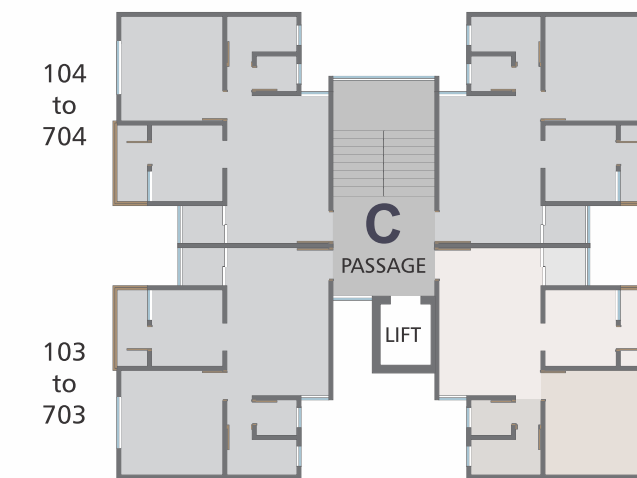
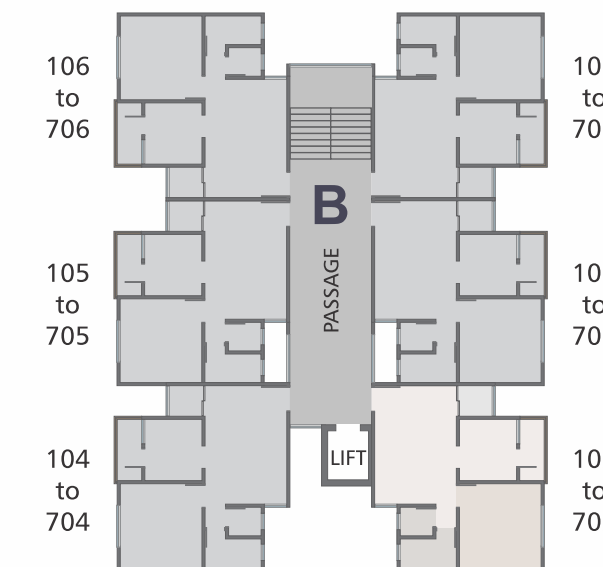
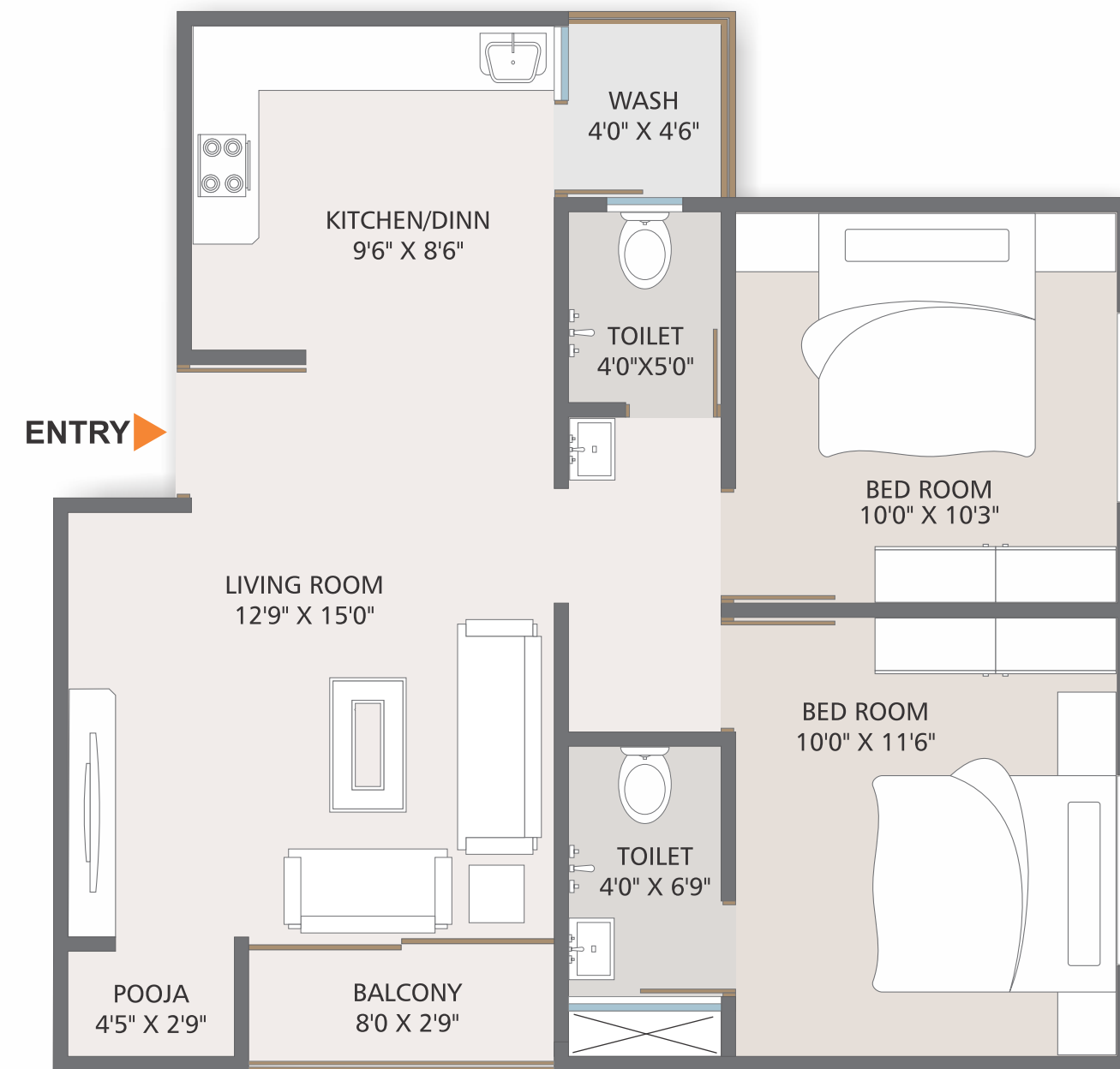
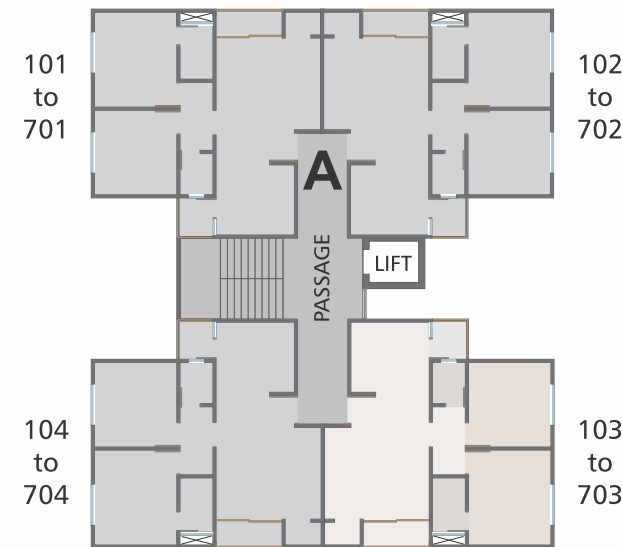
Safety

Affordable

AARYA
ELEGANCE

TYPE - A

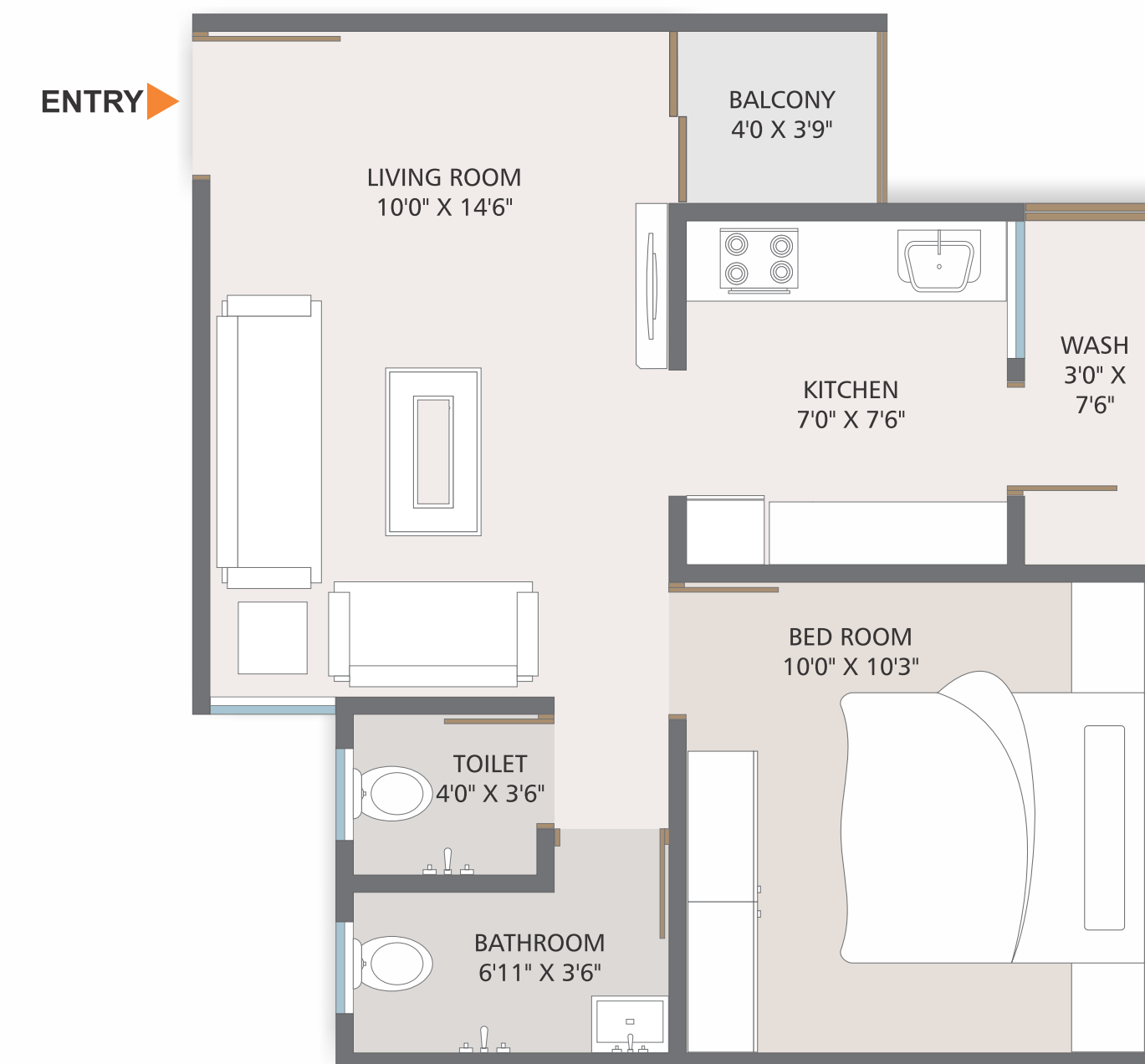
2BHK



www.sudhapatidevelopers.com

TYPE - B C D

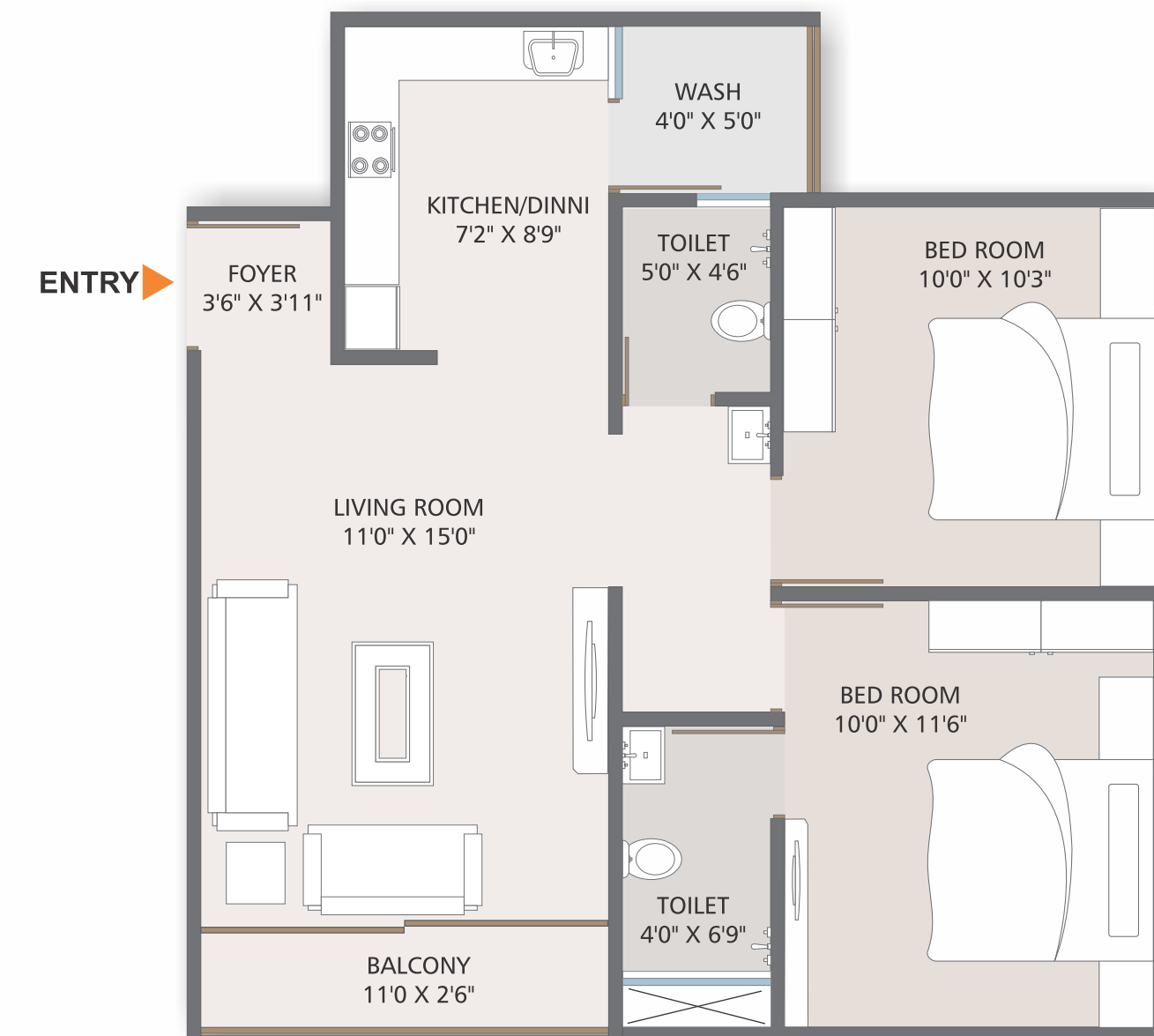
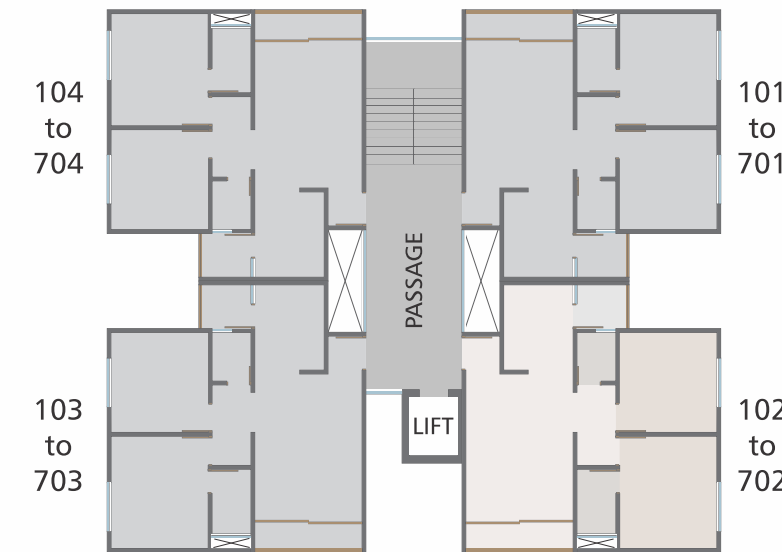
1BHK



AARYA
ELEGANCE

TYPE - EFGH

2BHK



AARYA ELEGANCE

_ Specification

Structure : Earthquake resistance RCC framed structure design.

Finishing : Internal smooth plaster with white cement putty finish and external double coat plaster with 100% acrylic paint.

Flooring : Vitrified tiles with polished 2x2 flooring in all rooms.

Doors : Laminated Main door & Internal Enamel paint finish flush door with stone frame.

Windows : 2 track Aluminum windows and natural stone sills.

Kitchen : Granite platform with SS Sink & Premium branded wall tiles dedo upto lintel level.

Bathroom : Designer tiles upto lintel level with standard quality C.P.Fittings.

Electrification : Concealed ISI mark copper wiring, AC points in master bedrooms & Good quality modular switches.

Plumbing : Systmetrix concealed U-PVC & C-PVC plumbing.

Water Supply : Underground and overhead water tanks.

www.sudhapatidevelopers.com

